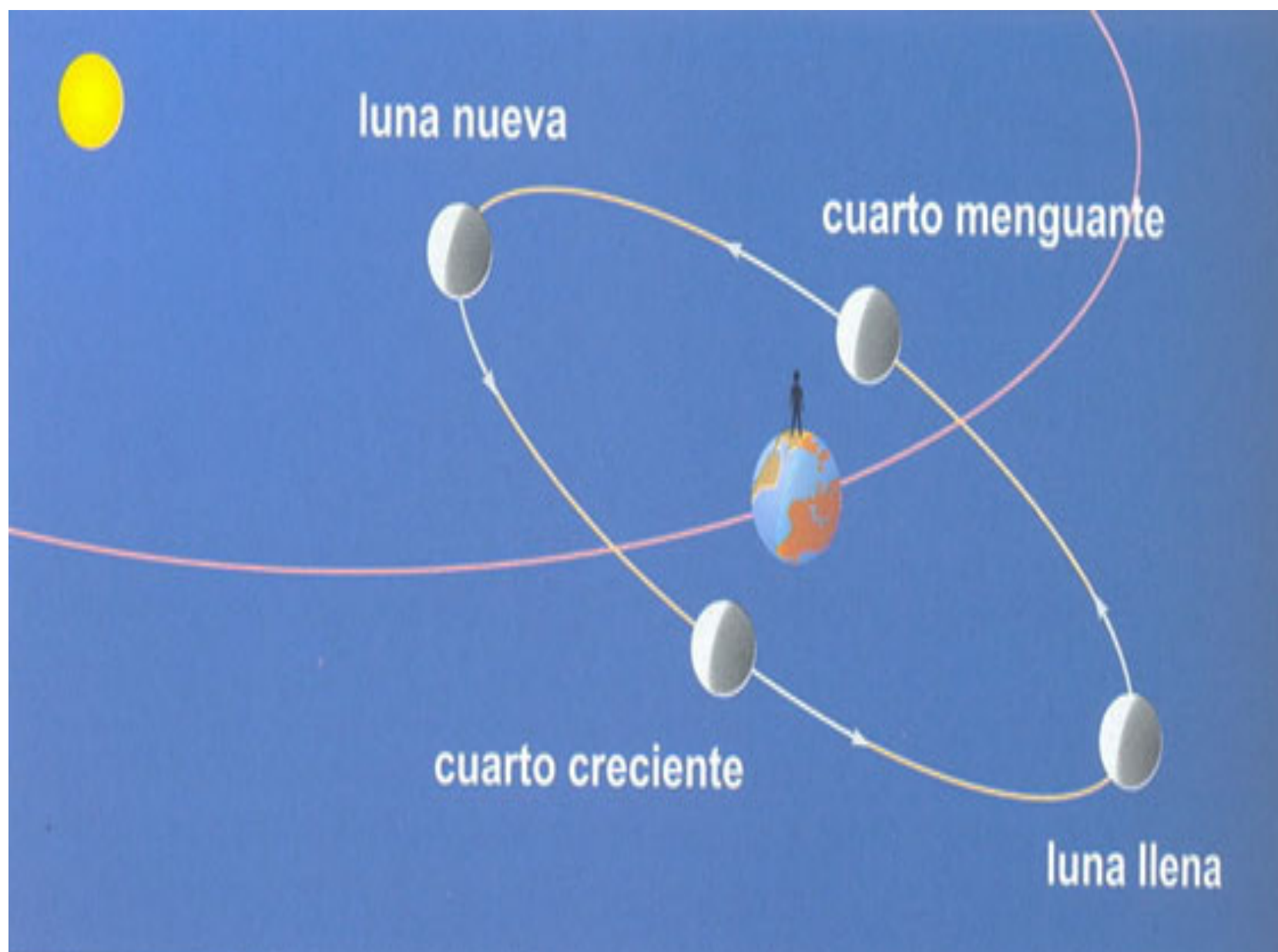
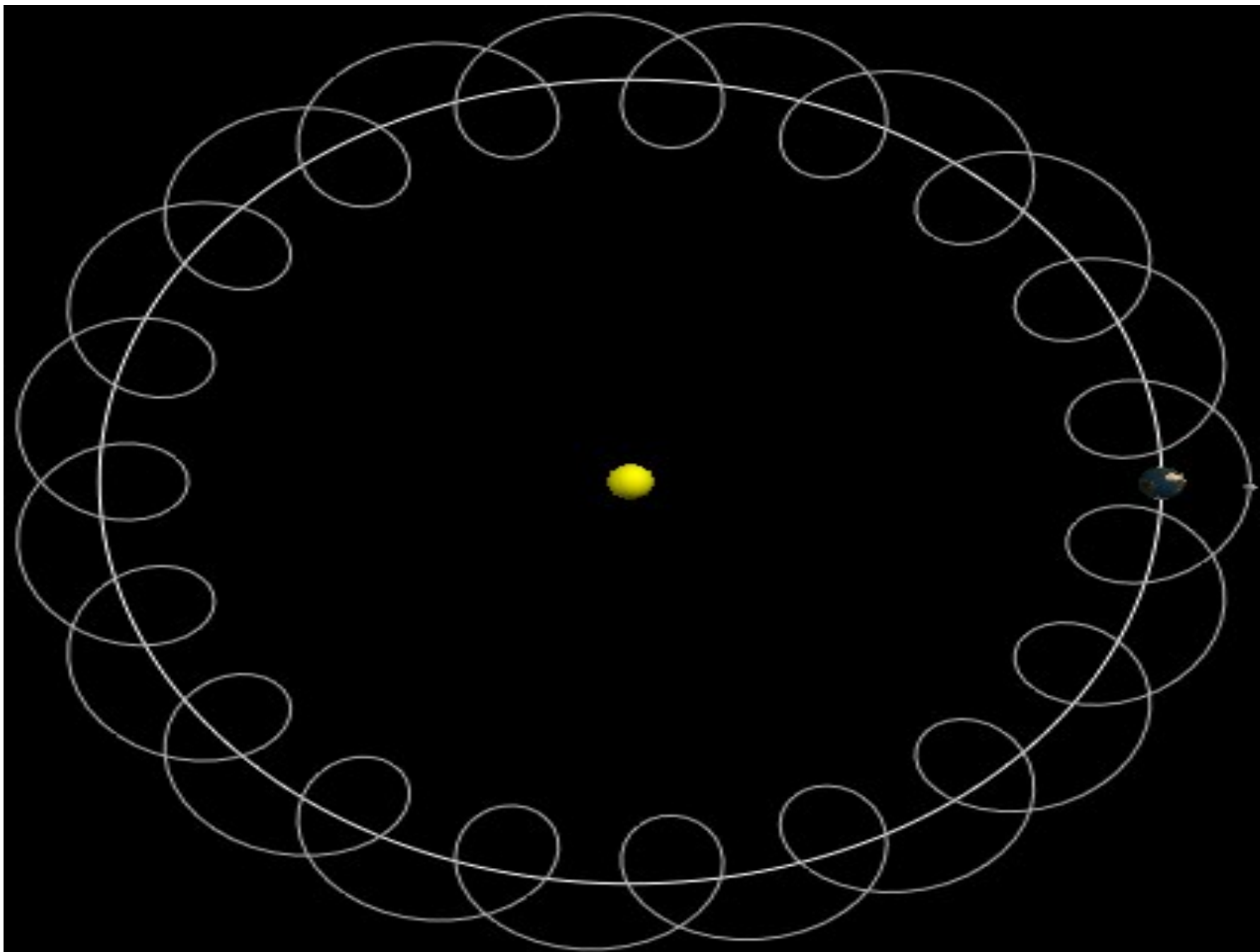
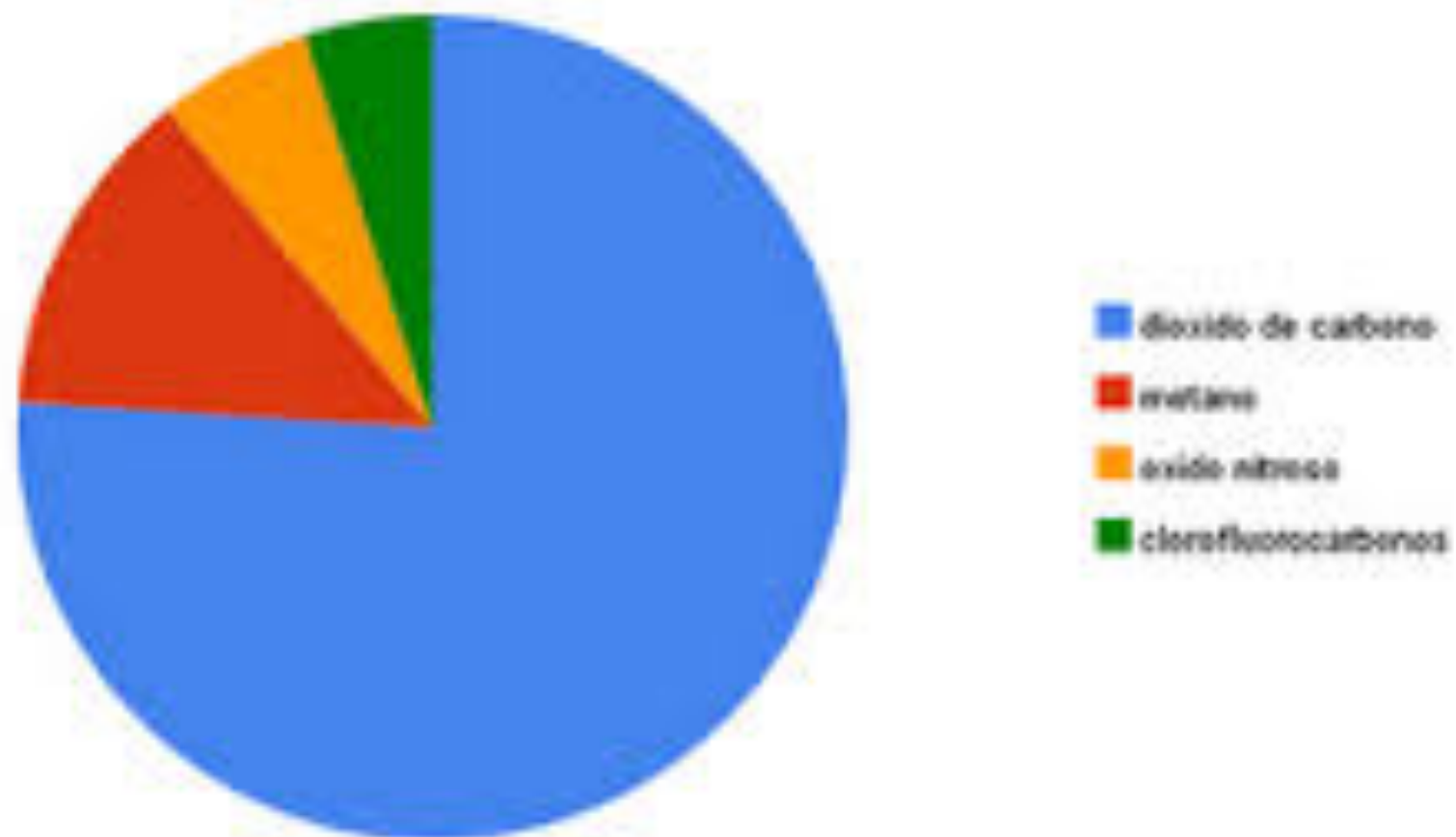


**“OBSERVANDO LA NATURALEZA  
DESDE PUNTOS DE VISTA  
COMPLEMENTARIOS”**



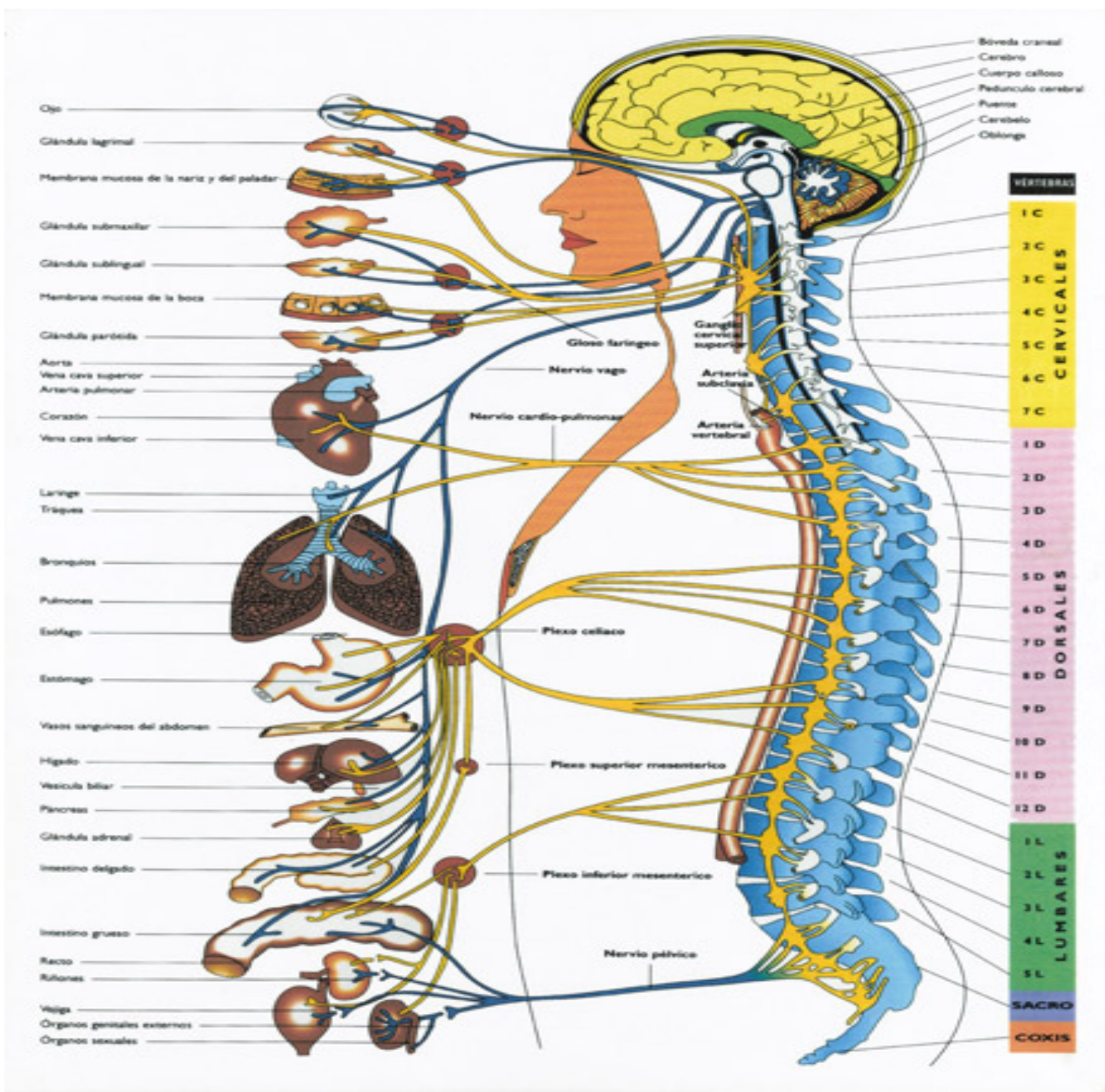


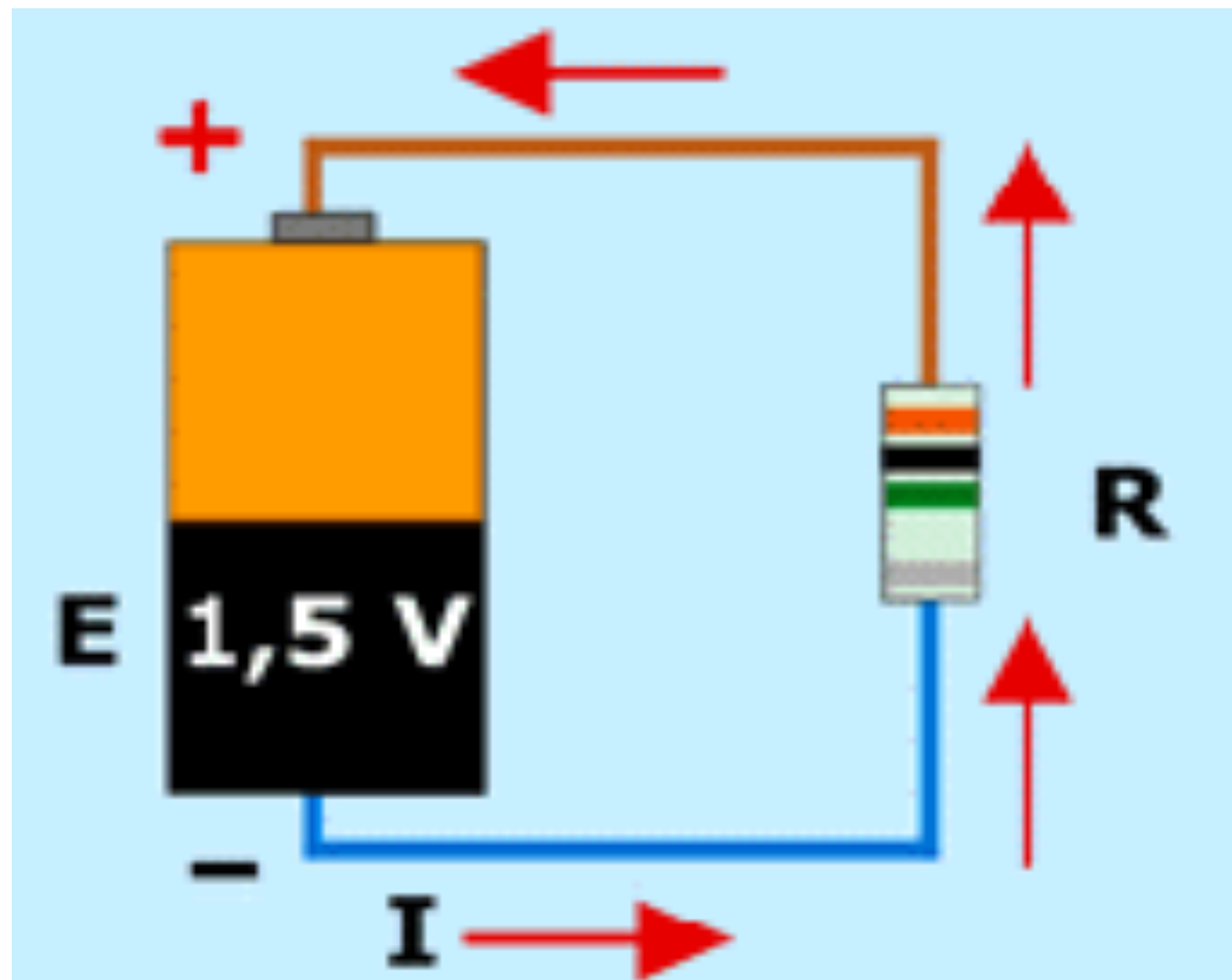
## gases efecto invernadero



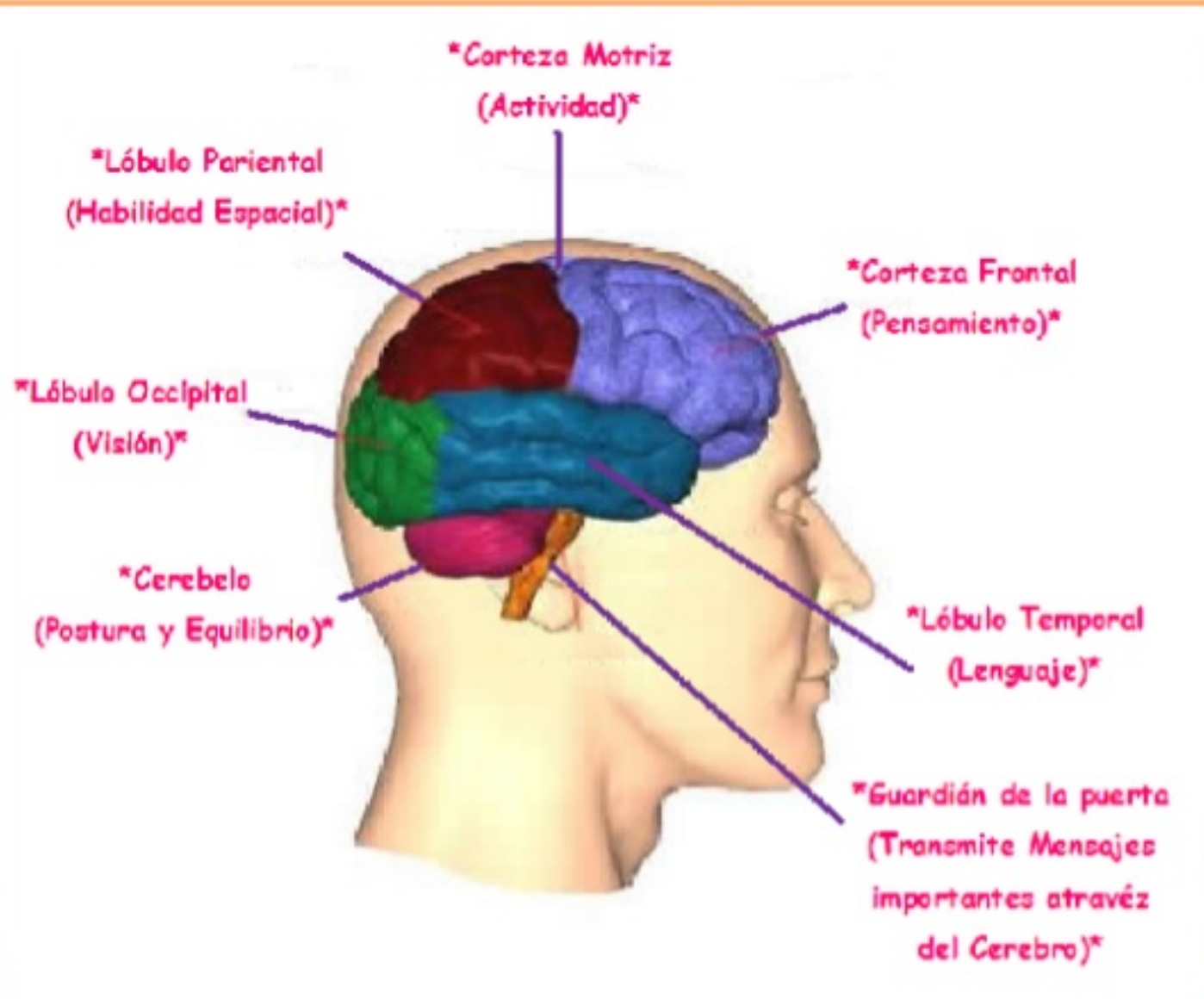


Unhindered by Talent

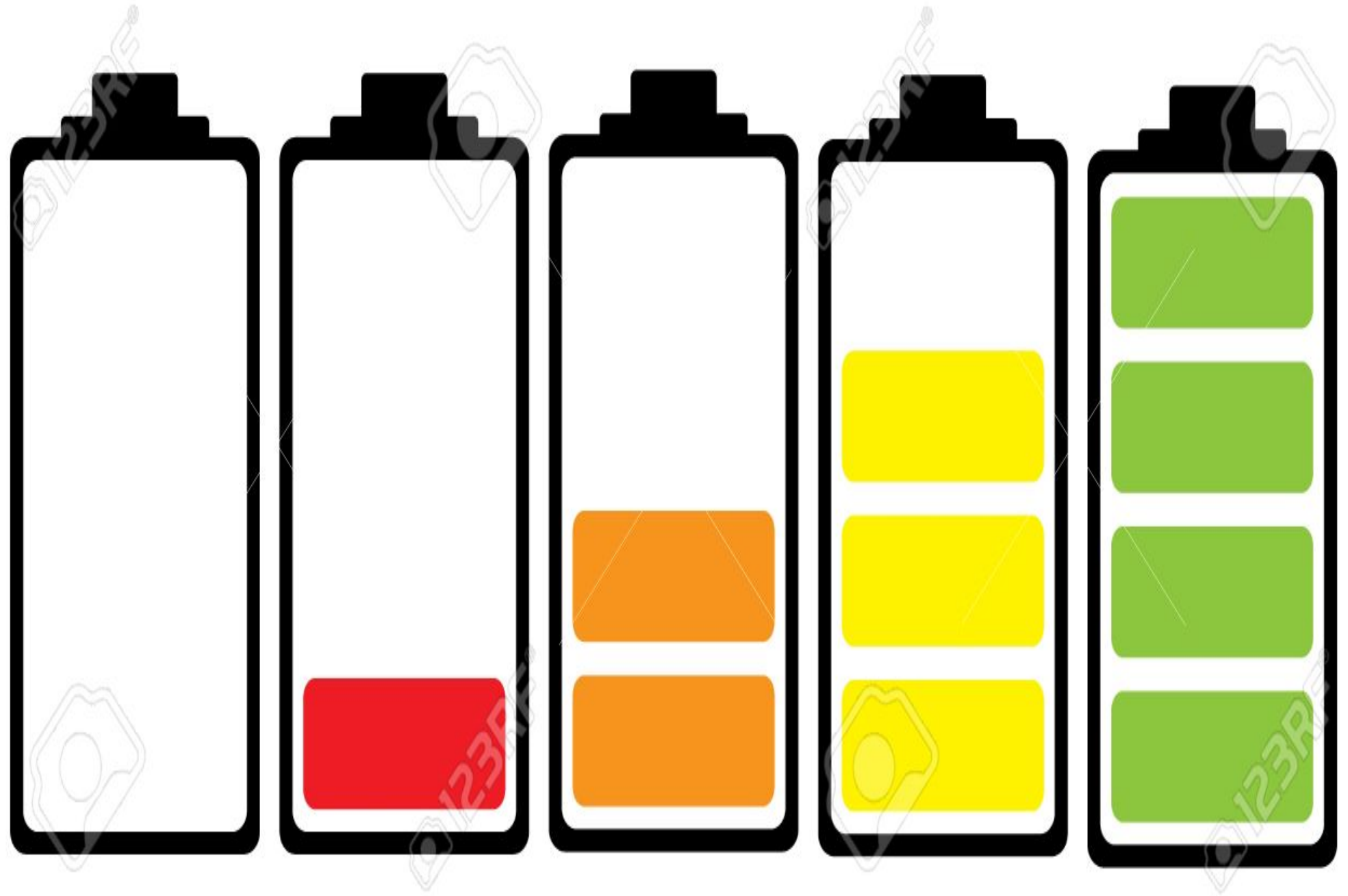


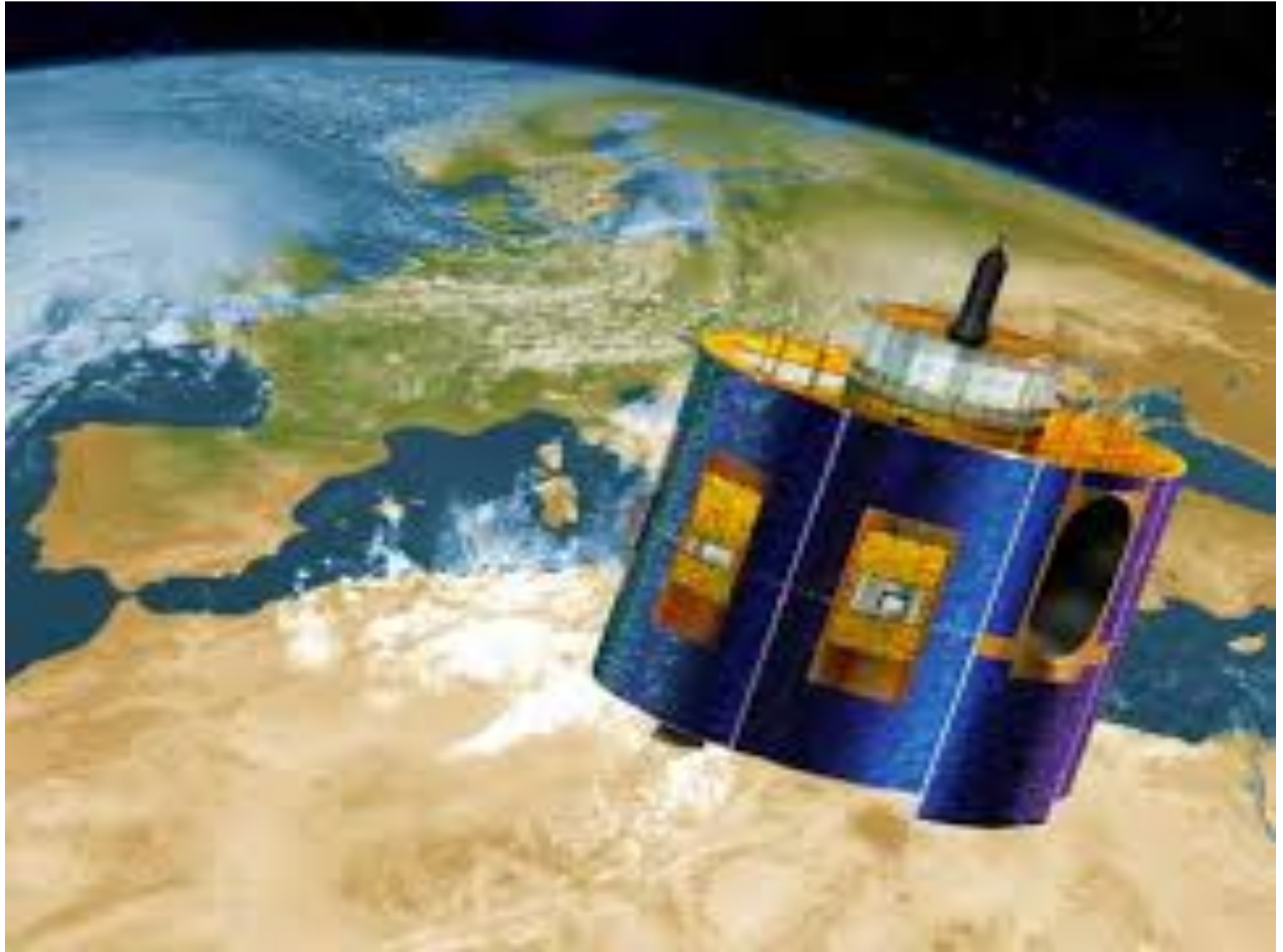


# \*Partes del Cerebro y sus funciones\*

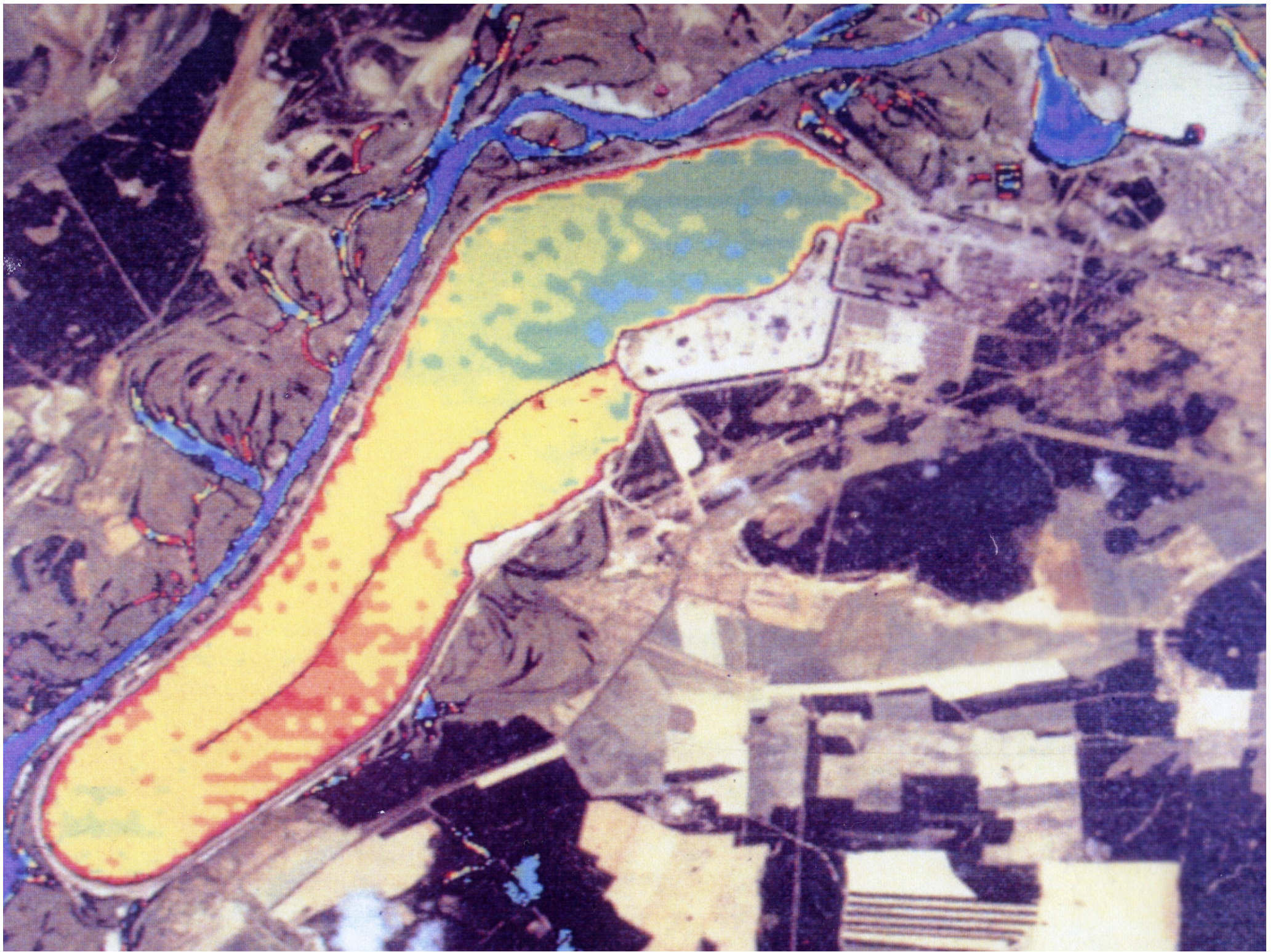






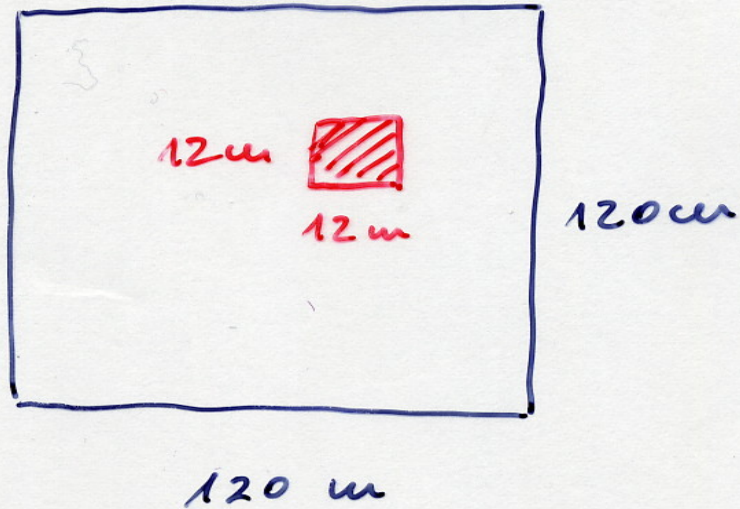






# DETECCIÓN CATÁSTROFE DE CHERNOBYL

Cómo se vio el reactor averiado en una imagen Landsat thematic Mapper:



En los pixels vecinos:

$$T = 300 K$$

En el pixel donde se encuentra el reactor:

$$T = P_1 T_1 + P_2 T_2$$

$$\text{donde } P_1 = \frac{12 \times 12}{120 \times 120} = 0.01 \rightarrow P_2 = 1 - P_1 = 0.99$$

$$\text{Así } T = 0.01 \times 1500 + 0.99 \cdot 300 = 312 K$$

cómo 1 nivel = 0.5 K  $\rightarrow$  24 niveles más alto





**“OBSERVANDO LA NATURALEZA  
DESDE PUNTOS DE VISTA  
COMPLEMENTARIOS”**